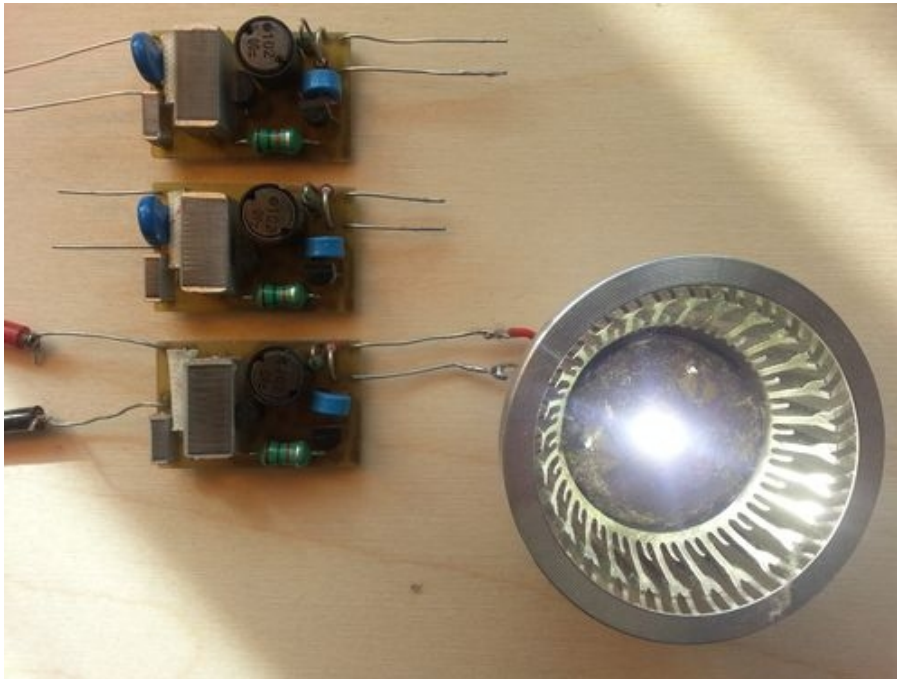


1W LED compact Lamp



Characteristics:

Designation: 1W LED Spot

Leuchtmittel: LED 3.6V, 300mA

Application: Lightning

Power: 230V/50Hz

Prize: low cost

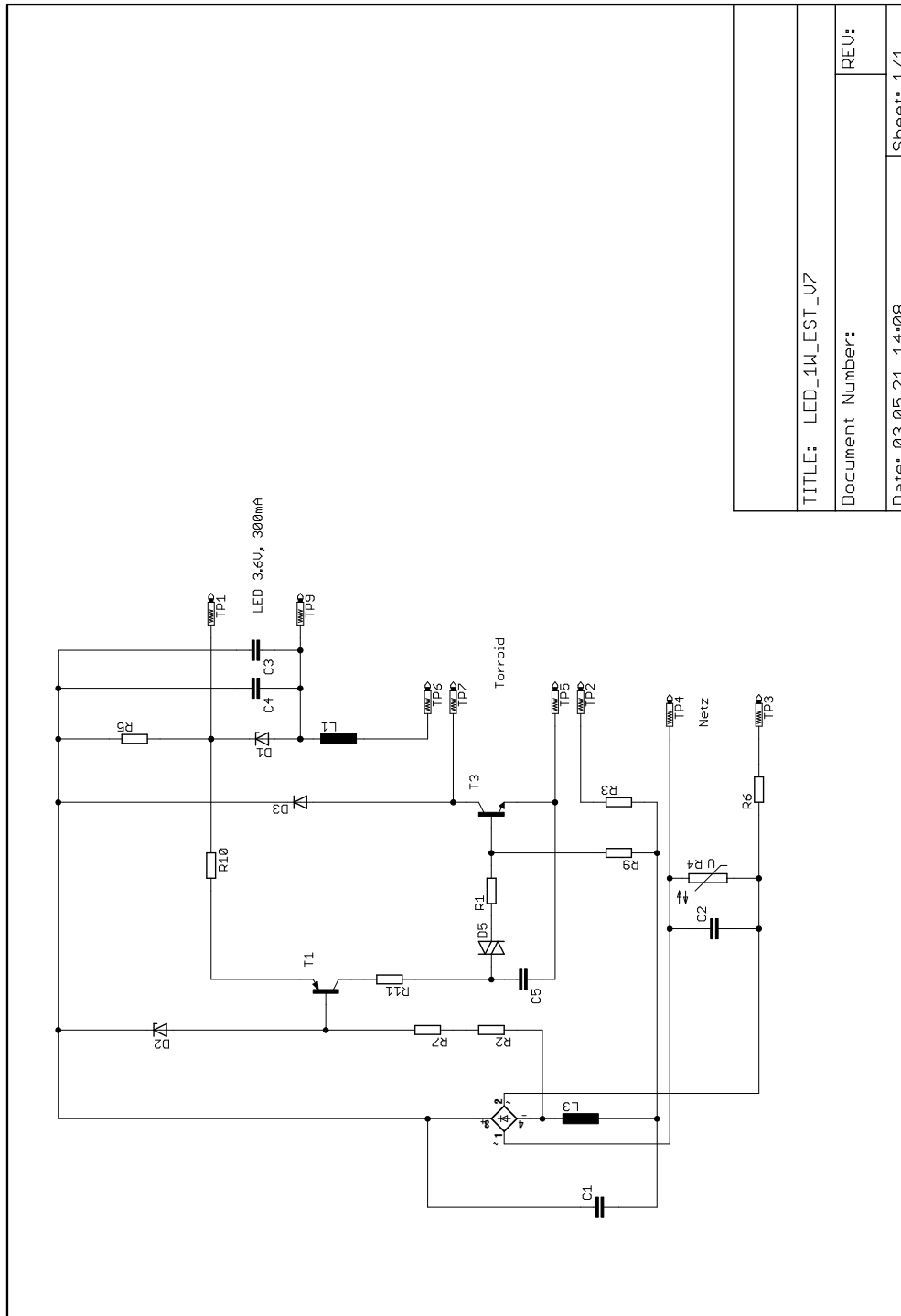
Special: Low size, no electrolytic capacitor, long live.

Description:

This is a 1W LED lighting, which can be operated directly from the mains. The LED must be mounted isolated on the heat sink, because there is no galvanic isolation between input and output. For space reasons, a transformer was omitted.

The driver electronics consists of a self-oscillating flyback converter, where each switching cycle is re-ignited by means of a DIAC. The LED current is regulated. The circuit does not contain an electrolytic capacitor in order to increase the lifetime significantly.

Circuit diagram:



TITLE: LED_1W_EST_U7	
Document Number:	REV:
Date: 03.05.21 14:08	Sheet: 1/1