

Comfort Light for Refrigerator 2x8W



Characteristics:

Designation: Comfort Light for Refrigerator

Light Source: 2x(8x1W) LED 3.6V, 300mA

Application: Lightning

Power: 85V-265V/50/60Hz

Prize: low cost

Special: SEPIC converter with galvanic isolation for wide input voltage range from 85V-265V.

The light slowly gets brighter when opening the door.

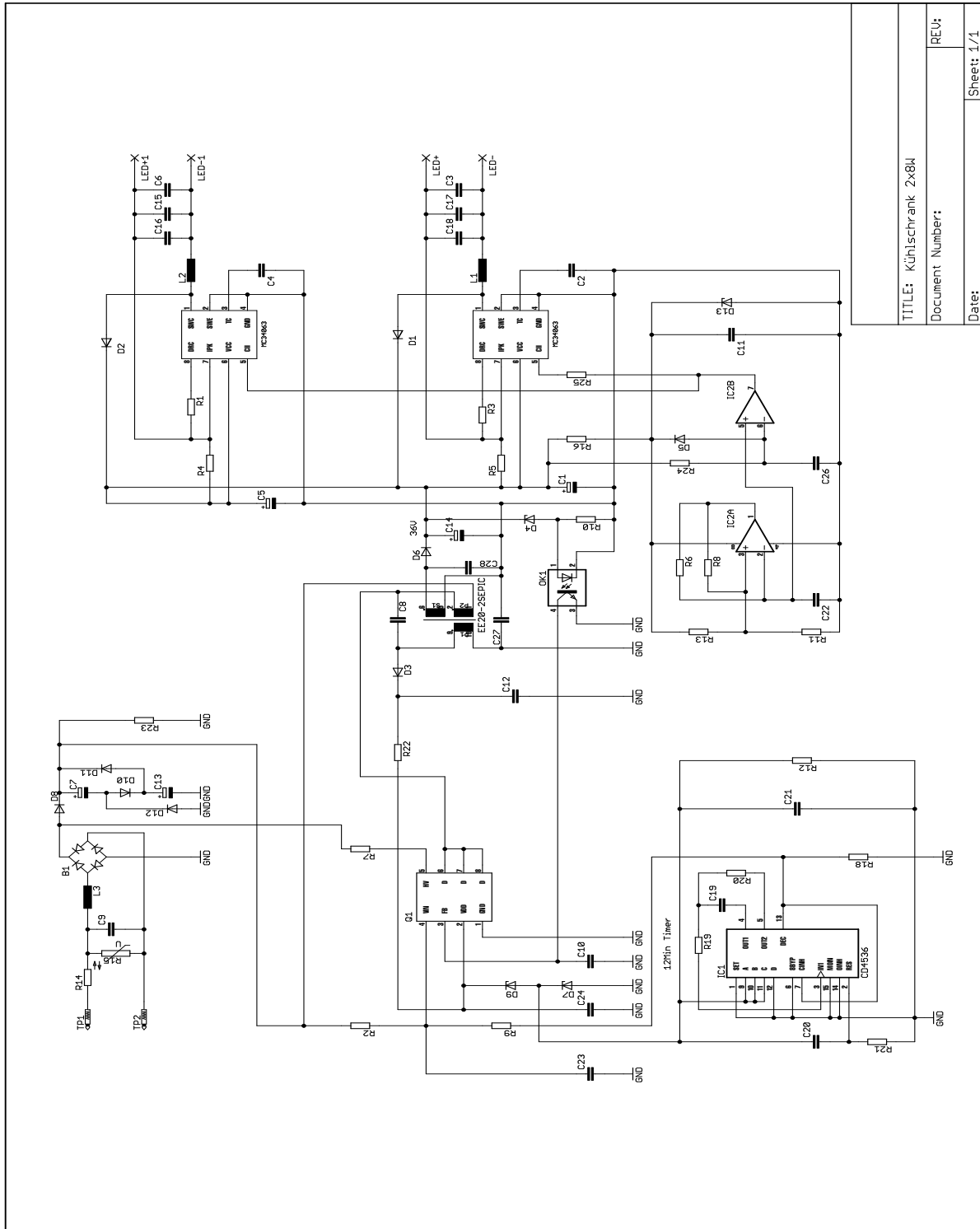
A timer switches off after 12min.

Description:

It is a LED refrigerator lighting with comfort functions.

The power supply is realized as SEPIC converter with galvanic isolation between input and output, so that a wide input voltage range of 85-265V is guaranteed. The SEPIC converter can set the output voltage high and low according to the input voltage, so the output voltage is always the same regardless of the input voltage. The output voltage is 36 volts. This supplies two driver IC for two sections with 8x1W LED each. This makes the solution suitable for worldwide use. In addition, cost-effective components were considered for the solution so that the product would be marketable.

Circuit Diagram:



TITLE: Kühlschrank 2x8M

Document Number:

Date:

REV:

Sheet: 1/1